



The purpose of the Guild is to promote and preserve the art and history of quilts through education of its members, and to inspire community involvement.

The Guild depends on the cooperation of the entire membership for the success of its projects.

Inside this issue:

Bee Buzz	10
Community Quilts	2
Guild Projects	11
Lecture/Workshops.....	8 & 9
Membership.....	4 & 5
Official Business	6 & 7
President's Block.....	4
Special Events.....	3
Ways & Means.....	5

Member News

Condolences to JoAnne Hewatt, whose father-in-law recently passed away.

Condolences to Robin Brooks, whose mother, Jewel Obara, recently passed away. Jewel was a former guild member, as was her sister, Kay Rash.

Best wishes to Wilma Hamlin, who is doing her best to combat the ongoing health care crisis right here in Asheville. She has undergone multiple emergency trips to the hospital and uncounted surgical procedures this past month, and is now recovering peacefully at home. We thank her for her sacrifices for our community and wish her (and her sense of humor) well.

Best Wishes to Sue Weaver, who is recovering from a broken knee caused by a sledding accident.

Contact **Neva Carlson** at 252-1661 or nevacarlson@charter.net with your news items for this space.

Letter from our President

Greetings to all!

My new role does not quite fit yet but I am looking forward to a very good year working with all of you! I was very reluctant to do this job earlier but now I am anticipating having a good time, becoming better acquainted with more of you and getting a lot done for the Guild and the community! We have a super group of folks on the Board and chairing committees this year! There are several special projects that are in the planning. My experience with the Guild is that we are a group of active volunteers who most often say "yes" when asked to do a job for the Guild. I am always impressed and amazed! We will need even more volunteers this year with both Ricky Tims and the Quilt Show coming up in September. I am sure that we will do a great job on both!

One goal that I have for this year is to provide more social time for all of us at meetings. In order to do that we are going to try to keep our business meetings to a half hour. This means people need to read the *disPatch* and look on the website in order to keep informed about all of our activities. We want to have a great Show and Tell as well as time to see friends and make new ones before the meeting and at break time. We have super speakers this year and want them to have their full time as well.

Hopefully this can be a year of new inspiration, fun volunteering for the work of the Guild, making new friends and enjoying "old" ones.

I hope everyone will feel free to contact me or other Board members and Committee Chairs with your concerns and ideas about how we can improve the Guild to make it more enjoyable for all of us and more responsive to the community.

Sara



COMMUNITY QUILTS

"Thank you for the beautiful baby blankets that you made as gifts for the women who come to Asheville Pregnancy Support Service. Many times when we are facing challenges in our lives, it touches us deeply to know that someone cares enough to do something special for us."

I was impressed at the February AQG meeting at how busy you members have been over the winter with making community quilts. February was a bumper crop month in how many quilts were turned in, of all types and sizes. Some were Bee challenges, some were the "I Spy" quilts from the January meeting, already finished! Some were the new Premie Crib Quilts from kits that Sandy Gillis put together. There were lots of Linus quilts, which are fun to make and you know will bring a smile to a child's face sometime soon. A few were even Habitat quilts, the largest ones we usually make. And the quilts made from Sara Hill's challenge blocks continue to pour in, all very different and colorful. How productive we are, in addition to the creativity always displayed in the quilts we make for ourselves and our own families. And what fun to see what everyone has been working on!

Among all of the finished quilts, I received some tops that need to be sandwiched and quilted. Although most members turn in completed quilts (many thanks to you!), for a variety of reasons, the members who made these tops weren't able to complete the quilts. Batting and backings are available from the community quilts stash and the Linus Bee that meets in Black Mountain monthly is more than happy to sandwich them. Then they need to be adopted by someone willing to do the quilting. Sara Hill, members of the Linus Bee, or I sometimes do it, and for the very large quilts, our long-arm quilters are very generous with their help, but that still leaves some of the medium sized quilts (about 45" X 60") to be adopted. It's a great opportunity for someone who wants to practice their machine quilting skills (of whatever design you like, including stitch-in-the-ditch) on an already-completed top. If you are willing to do this step and then pass it on to someone else for binding (if you wish) please let me know (katie@winchell.us or 298-2560).

Just FYI, the website is being constantly updated with new information. For those of you who were

interested in the Weighted Blankets for children with autism spectrum disorders, the pattern is now under the Community Quilts tab on the AQG website, as are the patterns for the Premie Crib Quilts and the "I Spy" Senior Quilts.

And finally, for a fun day of camaraderie with fellow crafters, AQG members are invited to participate in the Project Linus Make-a-Blanket day on Saturday, March 19 from 10 am to 2 pm at the Kate Reynolds & Volunteer Classroom in the trailers outside of Mission Hospitals. Bring a sewing machine, if you can, and join the energetic group making tied quilts, fleece blankets, and knitted or crocheted afghans. Refreshments provided by Mission Hospitals.

Katie Winchell, Chair
katie@winchell.us



Note from Katie:

A possible free Community Quilts workshop is in the works for later this Spring. Stay tuned for more details.

Presidents Block Instructions for Betty Fauerbach

The block should be the maker's favorite star. It should be 6 inches finished, 6 ½ inches unfinished.

The background should read as cream or light beige.

Use autumn colors when constructing the star.

When the block is turned in, please include a 6 inch square of the background color and 6 inch square of star fabric color. This will be used in the border. Include with the star the name of the star (many stars have several names). On one of the background corners, please write the maker's name.

From Elaine Zinn: Please turn in your block directly to Betty. Thank you.

SPECIAL EVENTS - THINGS TO DO - PLACES TO GO

Deerpark Art Show July-October 2011 Theme- Tiffany Stained Glass

The special events department at Biltmore Estate is bringing a Tiffany Exhibit to Antler Hill Village later in 2011. During that time they are going to have an art show at Deerpark with an over all theme of stained glass. The pieces can not only be inspired by stained glass, but also by the elements of nature that are often incorporated into Tiffany Stained glass – like butterflies, dragonflies, peacock feathers, and various flowers. The art show will include the watercolor, photography and quilt groups. The exhibit is limited to 20 (21) items, each group will only submit 7 pieces, but because the show is 4 months (July – Oct) the art may be switched out half way through to give more artists a change to participate. So we will need 12-14 wall quilts. This is an excellent opportunity to have quilts exhibited alongside other art forms.

Quilts will be collected in June. If you are interested in participating please let me know ASAP. Spaces are limited and will be on a first come basis, one quilt per person. Items must be for sale, with the Estate retaining a 25% commission. Quilts should measure no more than 50" on any side. Remember the theme is Tiffany Stained Glass. Contact Connie Brown 285-0318 or mail2thebrowns@juno.com

Guidelines and requirements

All quilts must meet the guidelines and theme in order to be included in the art show. No side larger than 50" and the item must be for sale. All quilts available from drop-off in June until Nov 1, 2011.

Theme--Tiffany Stained Glass

The pieces can not only be inspired by stained glass, but also by the elements of nature that are often incorporated into Tiffany Stained glass – like butterflies, dragonflies, peacock feathers, and various flowers (wisteria, iris, rose, etc..) All quilting techniques are acceptable: appliqué, pieced, painted, embellished, hand work, machine work, surface design. Quilt does not have to be a traditional stained glass quilt (it can be) but it must have a visible design element that was inspired by Tiffany stained glass elements.

The Fiber Arts Alliance

announces its "Artful Bra Challenge". Make an Embellished Art Bra. Deadline for entries is April 5th. Entry forms at Kitsch Fabrics or on request at info@kitschfabrics.com. For more info contact Kitsch Fabrics at 828-505-8280.

WNCQG's workshops

If anyone is interested in taking one of WNCQG's workshops. Please refer to WNCQG's monthly newsletter, Grainlines, available through the website (westernncquilters.org) for workshop registration form and policies.

March 18 - Paula Golden - "Binding Basics"

May 20 - Mary Ellen Kranz - TBA

July 22 - Wendy Butler Burns - "Outside the Block"

October 21 - Patsy Thompson - Autumn Leaves - Adventures in Fabric & Threads

November 18 - Karen Kay Buckley - "Garden Medley" (applique)

2011 SMQ Quilt Show & Competition Guide

Days: March 18-20

Times: Friday & Saturday 9:00 – 5:00
Sunday 11:00 – 4:00

Place: Cooper Athletic Center
Maryville College Campus

Admission: \$5 one day
\$8 multi-day pass

(\$1.00 off on Sunday with can of food)



Check out all the events listed on the AQG website.

<http://www.ashevillequiltguild.org/events.html>

Block of the Month for Sharing March 2011

“Fabric Frolic” or “Square in a Square”

Although the instructions below are for blocks for a crib quilt, AQG will be happy to accept however many 6 ¼ “squares you make!

Cut 24 5” squares.

Cut 24 4” x 8” squares. Then cut each square in half to get 2 4” squares. Cut each of these in half diagonally to get 96 triangles.

Pair one set of four triangles with one 5” square.

Fold the square in half vertically and horizontally and finger press a crease in each direction.

With right sides facing, match the long raw edge of 1 triangle to one side of the square aligning the triangle’s point with the crease. (The triangle is slightly longer than the square so it will extend a bit at the corners. Lining it up correctly is important because when you are finished with the block it should make a bigger square.) Stitch making a ¼” seam. Repeat sewing another triangle to the opposite side of the square.

Press both triangles with the seam allowance going toward the triangle.

Sew 2 more triangles to the remaining sides of the square. Press to complete the block.

Finished block should be 6 ¼ inches square.

24 of these squares plus sashing will make a crib size quilt.

88 will make a twin quilt, 120 a double or queen, 156 a king.

Bring your blocks to the next Asheville Quilt Guild meeting and enter your name for a prize drawing.

Janie Wilson

MEMBERSHIP

Remember that membership renewal for 2011 is now due. Renew your membership by March 15.

The following are new members of the AQG who joined in February: Judy Pheanis, Darlene Morse, Mary Baber, Madelyn Edwards, Patricia Hammond, Lisa Heller, Pam Knies, Diane Merrill, Carolyn Prater, and Jerry Brummett. Please welcome them to the guild as you see them at the meetings.

The deadline for names being included in the 2011 Membership Directory is by the March 15 guild meeting. The renewal form is included in the newsletter and will be available at the Membership Table at the March meeting. Renewing by March 15 ensures that your nametag will be professionally printed and your name will be included in the 2011 directory.

Julie Bagamary and I look forward to working with the membership this year.

**Respectfully submitted,
Kitty Etterman, Membership Co-Chair**

Editor Note:

The membership renewal form is included in the newsletter. If you need a copy of the form you can follow this link and print it out.

www.ashevillequiltguild.org/AQG2011mem.pdf

LIBRARY NOTES

A new art quilt book has been added to the library. It is: ***Quilting Line+Color*** by **yoshiko jinzenji**.

Peggy Tobin, Librarian

Ways and Means

February Update

The Opportunity Quilt "*Tradition with a Twist*" is ready for road trips. If you know of a quilt show or event where we might exhibit the quilt, please let me know. Please pick up your tickets at the March meeting (thanks to those who picked theirs up last month). Julie S. and Norene made the first two silent auction quilts and they are spectacular! They are also lonely, so please make some little quilts to keep them company.

Linda Nichols, Ways and Means chair

Report on HCC Scholarship

Although the guild no longer contributes to this fund, we have slightly more than \$5000 in a scholarship fund at Haywood Community College. We have provided a \$500 scholarship to Angela Kane for each semester of 2010-2011. Angela is a sophomore in Professional Crafts-Fiber and after graduation, she would like to work either independently or with an already established artisan within the textile community.

A reception will be given at HCC in April in appreciation for all scholarship sponsors and the guild will continue to sponsor a student in the Fiber Arts until the fund is depleted.

Jamie Berdahl

SPRING HOUSE CLEANING

If you plan to do Spring House Cleaning this year, especially in your quilting room, keep the Guild in mind.

We plan to have a booth at the Quilt Show that will sell (at greatly reduced prices) slightly used magazines, books, and patterns that have been donated. As you do your spring cleaning, please put any books, magazines, and patterns you no longer want aside. We will start collecting these things in June.

Community Quilts will be glad to receive any material you no longer want.

Betty Fauerbach

From the Historian

Please collect and send to me any articles, etc. you may see in your local papers or magazines pertaining to Asheville Quilt Guild or their members. These will be placed in the scrap-book.

**Thank you, Neysa Hurt
Historian**

Bernina quilting frame for sale.

It retails for \$2000 and I will sell it for \$1000. I bought it at Asheville Cotton Co. they have a small model display at the store. It can be set up for 60 inches or 120 inches.

Joan Kasper kasperpj@charter.net



Asheville Quilt Guild 2011 Membership Form

Please Print Carefully. This information will be included in the directory.

Name _____ Phone Number _____

Address _____ City/State _____

Zip _____ Email _____

In order to keep guild costs down, we plan to email and have the monthly newsletter available on the guild website unless you specify that you need to get a snail mail copy. Check here for snail mail _____

If you have a second address for part of the year

Address _____ City/State _____

Zip _____ Phone _____ Months at this address _____

The success of the guild depends on the participation of the entire membership which includes:

Payment of dues, which covers newsletter and other administrative costs

Participation in at least one guild committee or service project

Volunteering for at least two hours during the annual quilt show

(Help with computer tasks. If you have a computer, please indicate if you have working knowledge of the following programs:)

____ Word ____ Excel ____ Works Database ____ Access ____ Publisher

We need your help! Would you like to serve as an Officer, Committee Chair or serve on a committee?

Elected Offices: President, President Elect., Secretary, Treasurer, At Large Member (circle one)

Check the committees in which you like to participate?

- | | |
|-------------------------|-----------------------|
| 1 ____ Community Quilts | 10 ____ Ways & Means |
| 2 ____ Guild Projects | 11 ____ Equipment |
| 3 ____ Library | 12 ____ Holiday Party |
| 4 ____ Programs | 13 ____ Guild History |
| 5 ____ Workshops | 14 ____ Hospitality |
| 6 ____ Newsletter | 15 ____ Website |
| 7 ____ Membership | |
| 8 ____ Publicity | |
| 9 ____ Quilt Show | |

Please indicate your quilting interests to help us plan our programs

- | | |
|---|-------------------|
| ____ Hand Quilting | Quilting Level: |
| ____ Machine Quilting | ____ Beginner |
| ____ Hand Applique | ____ Intermediate |
| ____ Machine Applique | ____ Advanced |
| ____ Miniatures | ____ Professional |
| ____ Art Quilts | |
| ____ Quilted Clothing | |
| ____ Dye Techniques | |
| ____ Digital Imaging | |
| ____ Computer Designed Quilts | |
| ____ Quilt History or Historical Influences | |

Skills and services for hire may be listed in our service directory for those who join or renew **before** the end of Feb.

Check here if no changes to last year's listing _____
 Check here if you would like a new listing form or want to change your listing. _____

Make check payable to **A.Q.G.** and mail with completed form to:

Kitty Etterman
 100 Kindy Forest Drive
 Hendersonville, NC 28739

cetterma@bellsouth.net

New Member Dues:

March—May	\$25
Jun.—Aug	20
Sept—Nov	15

Add \$2 to have directory mailed

Renewal Dues: \$20,
 Pay by March 15

Check # _____ Amt _____

Cash Amt _____

OFFICIAL BUSINESS

Asheville Quilt Guild Minutes for the February Board Meeting February 1, 2011

Attendees: Jean Karpen, Janie Wilson, Roger Winchell, Sara Hill, Katie Winchell, Neysa Hurt, Yolanda Hall, Angie Lamoree, Barbara Pate, Grace Maxwell, Neva Carlson, Peggy Tobin, Kim Thompson, Betty Fauerbach, Helen Kehoe, Norene Goard, Charlotte McRanie, Sue Weaver

The meeting was called to order by Betty Fauerbach at 10:07.

The January minutes were approved by consensus.

2011 Quilt Show: Barbara Pate will ensure that the Guild has a table set up at the show to sell donated books and magazines.

Treasurer's Report: Angie Lamoree reported that the 2011 Budget will be published in the next Dispatch. Also, two internal auditors will review the books for 2010.

Community Quilts: Over 500 quilts have been donated by the Guild this year. More than 60 people attended Community Quilts day at Beth Ha Tephila Congregation.

Equipment: Norene Goard will be assuming responsibility for Equipment. She will meet with Maureen Kampen to ensure all Guild materials have been relocated from her basement.

OLD BUSINESS. The Asheville City School schedule will be followed for snow closings regarding Guild meetings. Guild By-laws and Guidelines will be published on the website (<http://www.ashevillequiltguild.org/>) and no longer included in the Guild Directory as a cost reduction. A printed copy will be available on request and given to all new members.

NEW BUSINESS. There are 18 non-Board committee chairs. After discussion regarding the inclusion and updating of the Board and Guild in Guild matters, Helen Kehoe moved that "The five members-at-large be given committee liaison responsibilities with the eighteen non-Board committee chairs." Neva Carlson seconded and the motion passed unanimously.

The next board meeting will be held on Tuesday, March 1, at 10:00 a.m. at Westgate Earthfare.

Future Board Agenda Items

The following items will be discussed at a future Board meeting:

- The current Workshop signup and payment process.
- The Membership chair needs assistance with the volume of work required.
- Contents and updates to Guild Directory.
- Dispatch content. \Nomination and selection process for Members-at-Large.
- Use of library books.
- Review and decide in which organizations the Guild should maintain membership (AQS, IQA, etc.).
- 2011 Quilt Show Silent Auction.

Meeting was adjourned at 11:08 a.m.

Respectfully submitted,
Sue Weaver
Secretary

Asheville Quilt Guild Minutes for the February Guild Meeting February 15, 2011

The meeting was called to order by Betty Fauerbach at 7:05 pm. The January minutes were approved by general consensus. The Treasurer's Report was approved by general consensus.

General Announcements

The 2010 Annual Report will be published in the near future.

Guild Projects

Julie Simpson thanked everyone who had volunteered for Guild projects this past year.

Joan Tolley announced that the next Super Saturday will be March 5 through April 9. Volunteers are needed – please contact Joan if you would like to participate.

Biltmore Deer Park has requested quilts to hang at a Tiffany Stained Glass Exhibit. All quilts should be Tiffany-themed in design or content. Maximum size is 50" and all quilts must be for sale. Fourteen quilts are needed. Please see Connie Brown if interested. National Quilt Day is March 19. Baby quilts are needed for donation. Please see Julie Simpson to donate.

Ricky Tims Seminar

Registration for the seminar will begin in March after a presentation by the Ricky Tims Committee.

Member Bees

Kim Thompson announced that there are currently 10 active Bees and encouraged new members to visit a Bee. All Bees are listed on the website and in the Dispatch.

Mary Rogers introduced the Biltmore Lake Quilters, who meet at the Biltmore Lake clubhouse the 2nd and 4th Thursday of the month 9:00-12:00.

2011 Quilt Show

The Quilt Show will have 35 spaces for vendors. If you know of a quilt-related candidate, please send the information to Barbara.

Linda Nichols has already received two Silent Auction quilts. Tickets for the Opportunity Quilt are available – please see Linda.

2011 Officer Nominations

The 2011 Nominating Committee consists of: Elaine Zinn – Committee Chair, Yolanda Hall, JoAnne Hewatt, and Kim Thompson.

The following slate was presented for approval:

Voting Board President: Sara Hill, President-Elect: Janie Wilson, Treasurer: Angela Lamoree (2nd year of 2-year term), Secretary: Jean Karpen

Members-at-large: Ann Garner, Julie Simpson, Sharon Smaldone, Barbara Swinea and Sherrie Traub (Note: Past President Betty Fauerbach will also have voting privileges for one year).

Betty Fauerbach read each name from the podium and asked for other nominees. No additional nominees were put forward. The full slate was elected unanimously.

Betty Fauerbach presented the President's gavel to Sara Hill. Sara thanked Betty for her past year of service and the Guild gave Betty a round of applause in thanks for her past year of leadership.

Continued on page 8

ASHEVILLE QUILT GUILD WORKSHOP REGISTRATION FORM

Susan Brubaker Knapp	Wed. 4/20	Whole Cloth Painting	\$40 AQG members \$55 non-members
Judy Coates Perez	Wed. 5/18	Ornamental Fiesta	\$40 AQG members \$55 non-members
Mary Stori	Wed. 6/21	Beading Basics & Beyond	\$40 AQG members \$55 non-members

Are you an AQG member? Yes/no Total Amount Enclosed \$ _____

Please date check with the date of the workshop and make it payable to Asheville Quilt Guild. Please write a separate check for each workshop.

Name: _____

Address: _____

Phone: _____ email: _____

Mail to Charlotte McRanie camcranie@gmail.com 419-0199
795 Lakey Gap Road
Black Mountain NC 28711

Cancellation policy: Workshop cancellations must be made with the workshop chair at least 14 days before the workshop date in order for the registration fee to be refunded. Otherwise, you must find a replacement for your workshop space and notify the workshop chair.

OFFICIAL BUSINESS continued

Sara Hill announced her Committee Chairs:

Voting Committee Chairs Community Quilts: Katie Winchell, Guild Projects: Elaine Zinn, Programs: Peggy Newell, Quilt Show: Barbara Pate, Ways and Means: Linda Nichols

Non-Voting Committee Chairs Equipment: Norene Goard, Member News: Neva Carlson Historian: Neysa Hurt, Hospitality: Helen McCarthy, Library: Peggy Tobin, Member Bees: Kim Thompson, Membership: Kitty Etterman and Julie Bagamary, Mentors: Nancy Mathewson, Newsletter: JoAnne Hewatt, Parliamentarian: Wilma Hamlin, Assistant Program Chair: Diana Ramsay, Publicity: Jamie Berdahl, Quilt Show 2012: Katie Winchell and Roger Winchell Website: Yolanda Hall, Workshops: Charlotte McRanie

All Officers and Committee Chairs are listed on the website.

2011 Budget

The 2011 Budget Committee consisting of Sara Hill, Wilma Hamlin, Angie Lamoree, Jean Karpen, Betty Fauerbach, and Janie Wilson created the 2011 budget, which was published in the Dispatch. Based on the Board's decision, this year's budget is a no-deficit budget. The final numbers were \$10,000 less than the 2010 budget. The new budget is kept in balance by the expected income from the Quilt Show and the Ricky Tims Seminar. Any future ex-

penses that exceed \$200 must be put before the general Guild for approval and will come from Reserves.

After discussion, Joan Tolley moved that the 2011 Budget be passed. Helen Kehoe seconded the motion. The Budget was passed by unanimous approval.

The meeting was adjourned at 7:50 pm.

Respectfully submitted
Sue Weaver, Secretary

Editor Note:

Please see April's *disPatch* for the Treasurer's Report

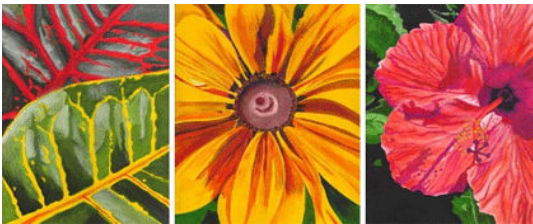
Lectures & Workshops: March, April and beyond!



March Program

The Guild is proud to present Philippa Naylor, an award-winning and internationally known quilter who has spent part of her life and career in Saudi Arabia. She will speak about her experiences in **The Good, The Bad And The Heat: Life, Quilting and Saudi Arabia** on Tuesday **March 15**. "A light-hearted look at living in the desert and how enforced isolation from the quilting community gave one quilter the opportunity to overcome many obstacles and become quite good at sewing!" Includes a trunk show and powerpoint presentation. Prepare to be wowed! She will also have her book, "Quilting in the Limelight: The Life, Art & Techniques of an Award Winning Quilter," for sale. (**Note: Philippa's workshops are sold out.**)

April Lecture and Workshop: Susan Brubaker Knapp. Susan will talk to us about her personal journey in **The Artist in You** on **April 19**. The following day she will teach **Wholecloth Painting** (*All levels welcome*). Students will learn the basics of creating wholecloth painted quilts based on photos. She provides most of the materials for a \$10 fee. You can learn more about Susan at <http://bluemoonriver.com/>. There are still a few spaces available!! But hurry!



May Lecture and Workshop: Judy

Coates Perez, a frequent contributor to *Quilting Arts* magazine and *Quilting Arts* TV, will speak to us about "**Inspiration: Where does it come from?**" at the Tuesday meeting on **May 17**. Her workshop on May 18 is called **Ornamental Fiesta**. Inspired by Mexican tin folk art, these fun festive ornaments incorporate painting with textile paints, quilting, embossing and sewing metal—all sorts of new techniques to add to your growing list! Most of the supplies are included in a kit provided for \$15. Judy picked this class for us because she says, "Everyone goes home with a finished project, it's a little different, getting to play with metal and I also give some basic instruction in painting. I have the happiest students in this class." Check out the picture of her finished project—I bet you could find a place in your home to hang yours!

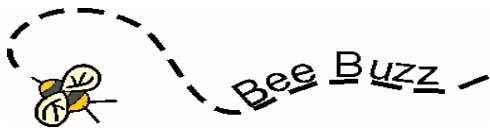


June Lecture and Workshop: Our own Mary Stori will present a brand new lecture entitled **Wool Collage – What's Old is New Again** on **June 21**. Mary has updated the mid-19th century penny-rug style of embroidered wool appliqué with a new look. She shares construction guidelines and inspires with examples of collaged traditional, folk art, and contemporary bead embellished wall quilts, table runners, tote bags, and more. Her workshop on **June 22, Beading Basics & Beyond** (*All levels welcome: Handwork - no beading experience necessary.*) introduces effective beading techniques with practical applications for quilts and garments. In the morning, you create a reference sampler as you learn: basic bead stitch, straight and curve line beading, scatter stitching, and the lazy stitch. The afternoon focuses on creative edging techniques to decorate...edges!! Students get two great classes in one! Kit fee required \$10.00 (contains the beads, embellishment items & beading thread).



Additional information including downloadable supply lists and registration forms is available at the website: www.ashevillequiltguild.org. Sign up for a workshop today!

Peggy Newell



Are you new to our guild or to the area? Just starting on your quilting journey? Would you like to get to know other quilters better, or find out more about quilting or guild activities? Would you enjoy a couple of hours of fun and fellowship with other quilters. Are you a current member who would like to meet and help new quilters and members, or are you looking for volunteers for your committees? If so, please join a Member Bee. Many close friendships are formed as you share quilting information in these smaller groups.

You may also start a new group, maybe in your neighborhood or at a time more suited to your schedule. All it takes is a few other quilters to start. Contact me and we can publish it here monthly. Visit one or more of the following groups. You are always welcome at any or all of them. Bring a project you are working on, especially if you need help or advice. Don't forget your SHOW & TELL!

Kim Thompson, Member Bee Chair,
628-1938 or lkbt94@aol.com

The Firehouse Quilters (North) - 1st & 3rd Thursday each month - 10:30 - 2:00 - Reems Creek Firehouse Community Room, Beaverdam Road, North Asheville. Bring lunch. Contact **Helen Kehoe** at 281-2098.

Beaucatcher's Bee – meets every Tuesday 10 am-noon, North Asheville Community Center, 39 E. Larchmont Rd (off Merrimon Ave). Annual Community Center Fee applies. Questions? Contact. **Mary Field**, 254-9128.

Lamplight Bee Meets on the 4th Monday of the month at 6:30pm, Oak Hill Methodist Church 277 Oak Hill Drive, Candler NC. Call or email **Betty Fauerbach** for more information at 627-9793 or emfauerbach@charter.net

South Asheville Bee - Meets at Earth Fare South community room, 1856 Hendersonville Road, on the second and fourth Thursday of the month at 9:30 a.m. Call **Ann Bordeau** at 650-9708 or **Alice Helms** at 277-9223.

Fiber Arts Alliance - Anyone interested in art quilts, any medium, or any level is invited to join. **1st Tuesday** each month at the West Asheville Presbyterian Church at 690 Haywood Road. 12:00 brown bag lunch, 12:30-3:00 meeting. Contact **Deborah Brown** at 456-7662 or email her at itsinourhands51@gmail.com or **Meg**

Manderson at 683-6563 or email her at megmanderson@gmail.com.

Quilts For Linus- The Linus Project is a nationwide volunteer project that collects blankets (quilts, knitted and crocheted items) for traumatized and hospitalized children. This group is open to everyone and meets usually on the 4th Friday (1 to 3:30pm). We have lots of new fabric donated by Marti's Patchwork Cottage. Come to select fabric to sew a community quilt at home, to help layer tops, to cut for kits or one that you want to make (bring cutting equipment) or sew (bring your machine) with us. Contact **Sara Hill** at 664-0974 for more information or directions.

East-Enders Bee meets the 2nd and 4th Wednesday of each month. We meet in members homes from 1-3. Members living on the East side of Asheville or in Swannanoa or Black Mountain are encouraged to join us. Contact **Maureen Kampen**, hyland77@yahoo.com or **Sally Gross-Holbrook** at 686-4616 for more information.

Spring Mountain. The Spring Mountain bee meets the second Tuesday morning from 10-12, teaching and working on quilts and other hand crafts, benefiting the local community, the Asheville Quilt Guild and other charities. It is open to everyone, and the contacts are **Kay Jenkins** at 628-7900 or **Kim Thompson** at 628-1938.

Biltmore Lake Quilters meet the second and fourth Thursdays each month from 9-1 at the Biltmore Lake Clubhouse. All are welcome (you do not have to live in Biltmore Lake). Contact **Mary Rogers** for more information at 665-2602 or rogmarync@charter.net

Little Bee - 1st Thursday evening each month at 7pm in each other's homes. Contact **Cindy Lund** at 252-5204.

Guild Projects

March 19 is 2011 National Quilt Day. In celebration of this day, AQG will again donate baby quilts to the nursery of Mission Hospital especially for babies born that day. Please consider making and donating a baby quilt. There are guidelines for quilt sizes and other special information on our website under community quilts. Please bring your baby quilt or a neo-natal quilt to the March 15th Guild meeting or to the Workshop the following day. Please give the baby quilt to Jean Karpen at the Guild meeting or to Elaine Zinn at the Wednesday Workshop. Last year we had 40 baby quilts to donate to the Mission Hospital Nursery, let's make that our goal for this year! Thank you.

Cloth Doll Show by AQG Members. The 2nd floor Gallery at the NC Arboretum's Education Center is adorned by 40 art dolls created in elinor peace bailey workshops plus more dolls adapted from other sources. There is even a doll and a child's garment created by epb. The dolls will be on exhibit thru the Arboretum's Orchid Festival held in April. As you can imagine, these dolls are creating quite a 'stir' on the second floor gallery. Little girls as well as adults are enjoying the dolls. Be sure to visit!

Our **Quilt in a Shoebox** program at UNCA Super Saturday, begins on March 5 at 9am and 10:30 am for 6 consecutive Saturdays. Joan Tolley is the coordinator and welcomes volunteers to teach beginning quilting to 3rd thru 8th graders. Please contact Joann at 828-669-4563 if you have a couple of hours on Saturdays to assist with this educational project with our future quilters. Check our website for pictures of last year's students working on their projects. Join the Super Saturday fun!

Large Quilt Display...NC Center for Creative Retirement, Reuter Center, has offered AQG exhibit space again this year to hang large bed-sized quilts in late May/early June during one of their special events. They will be on display for 2-3 weeks. If you have a large quilt you would like to display for 2-3 weeks, please contact Elaine Zinn, 350-1230 or email: ezonthemove@yahoo.com.

Elaine Zinn
Guild Projects



elinor peace bailey dolls at The Arboretum

CHECK IT OUT!

"MANY THANKS FROM THE FIREHOUSE BEE"

Thanks to Guild members for your generosity at the January & February meetings. We raised **\$532** for **Manna Foodbank** and we delivered 3 large boxes of toiletries for the women of Interlace.

Thanks, too, to raffle item donors and door prize donors.

We may have missed our holiday party, but we still had fun!

Firehouse Bee

LOST

If you lost several quilt patterns in the Folk Art Center Parking Lot in October, please contact Betty Fauerbach at emfauerbach@charter.net.

disPatch

Asheville Quilt Guild
P.O. Box 412
Asheville, NC 28802

Don't Forget!



**Name Tag
Show & Tell
Block of the Month for Sharing
Presidents Block for Betty**

March Meeting

**March 15, 2011
10:00 a.m. Folk Art Center
Philippa Naylor
The Good, The Bad and The Heat.
Life, Quilting and Saudi Arabia**

Philippa lives in Yorkshire, England and is an internationally known quilter who has spent part of her career in Saudi Arabia. Visit her website www.philippanaylor.com

Newsletter Publisher

JoAnne Hewatt
joannehewatt@bellsouth.net

828-681-8166

I am looking forward to being your newsletter editor this year. If you have any questions, comments, advice, please let me know.

The deadline for getting information into the newsletter will be the Monday before the board meeting, which is the first Tuesday of the month. The deadline for the **April disPatch** will be **April 4th**.

The Asheville Quilt Guild Meets on the 3rd Tuesday of the Month

**10 a.m. in Odd numbered Months
7 p.m. in Even numbered Months
(in the Evening in Even months!)**

**Folk Art Center Auditorium
Blue Ridge Parkway ... Asheville, NC**