



## **FLYING GEESE QUILT**

52-1/2" x 42"

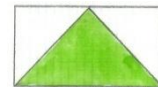
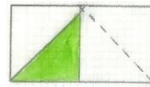
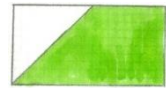
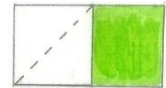
Asheville Quilt Guild

**Fabric Requirements:**

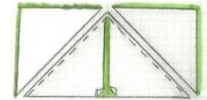
Light cream solid: 1-1/2 yds; cut into 10 width-of-fabric (WOF) strips 5" wide; cut 80 squares 5" x 5"  
Assorted darker prints or solids: 8 fat quarters; cut each into 5 rectangles: 5" x 9-1/2"; total 40 rectangles  
Border Fabric: 2/3 yard Binding: 5/8 yard

**Sewing Instructions**

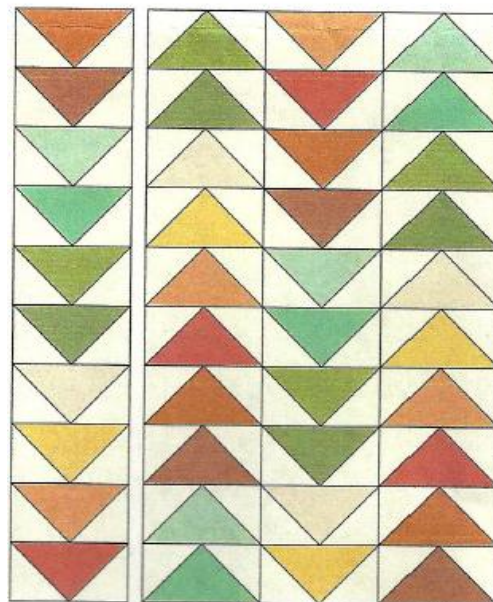
1. With pencil, draw diagonal line on wrong side of 5" light fabric squares.
2. Place marked light fabric square on darker fabric rectangle (5" x 9-1/2"), right sides together aligning outer raw edges. Sew on marked line, starting at center of rectangle and sewing toward corner.
3. Press light fabric triangle toward corner, ensuring that corners of light fabric align with darker fabric rectangle underneath.
4. Repeat steps 2 and 3 on the other side of the rectangle.  
Make 40 rectangles



**Note:** If you wish to utilize excess corner fabric to make "bonus squares" skip to optional instructions on page 3 before proceeding to the next step.



5. Trim away excess fabric under each light fabric triangle.
6. Referring to the **Assembly Diagram**, sew 4 vertical rows of 10 blocks each. Sew rows together. Prior to adding borders, the four rows sewn together should measure 36-1/2" x 44-1/2".
7. In order to have a finished quilt that doesn't require a pieced backing, the side borders of the quilt pictured are cut 3-1/2" wide; the top and bottom border were cut slightly wider at 4-1/2".

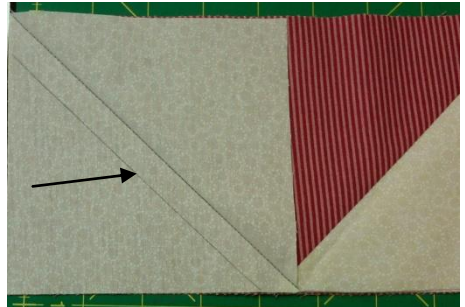


**Assembly Diagram**

## Optional “Bonus Squares” Instructions

These instructions enable you to make 80 half-square triangle squares from the excess fabric generated by making the flying geese using the method outlined on the preceding page. Complete Steps 1 through 4 on page 2 then follow the steps outlined below.

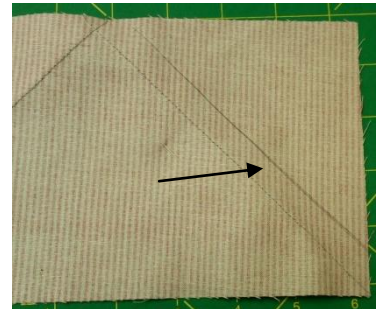
1. On the side that was sewn last (in step 4 above), flip back the top layer of light fabric. Draw a line in pencil on the lower layer of light colored fabric  $\frac{1}{2}$ " from the seam line on the side toward the corner of the rectangle. Stitch on this line through both layers of fabric – the light fabric and the dark rectangle fabric.



2. On the other side, flip back the top layer of light fabric and pin it out of the way. Since the seam is partially stitched down at the top, you will need to mark and sew this side from the back side.



3. Flip to the back side and draw a line in pencil  $\frac{1}{2}$ " from the seam line on the side toward the corner of the rectangle. Stitch on this line through both layers of fabric – the light fabric and the dark rectangle fabric.



4. Placing the flying goose unit face up where the light fabric is on top, cut between the two seam lines on each corner. You will end up with the flying goose unit shown in step 4 on page 2 and two of the half square triangles shown below.



5. If desired, use a square ruler with a diagonal line to trim the half square triangles to a uniform size. You should get squares of up to 4" but they can be trimmed to smaller sizes if you prefer.

